

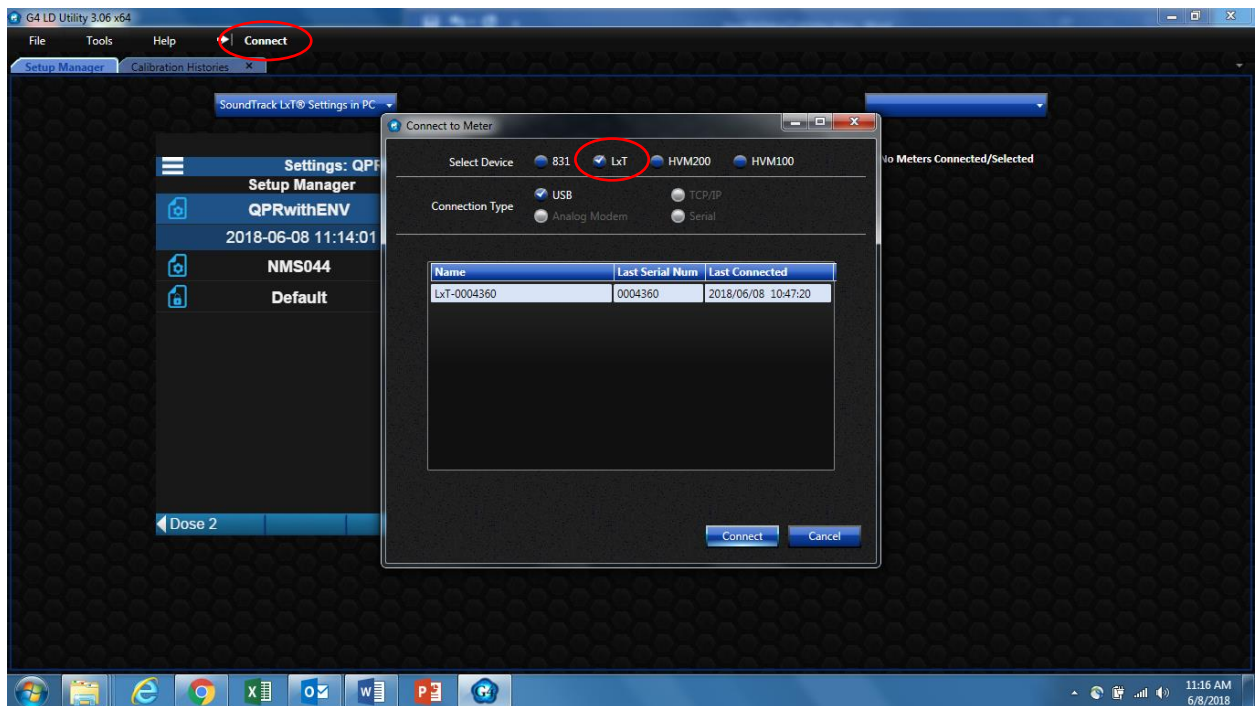
Open G4 Software



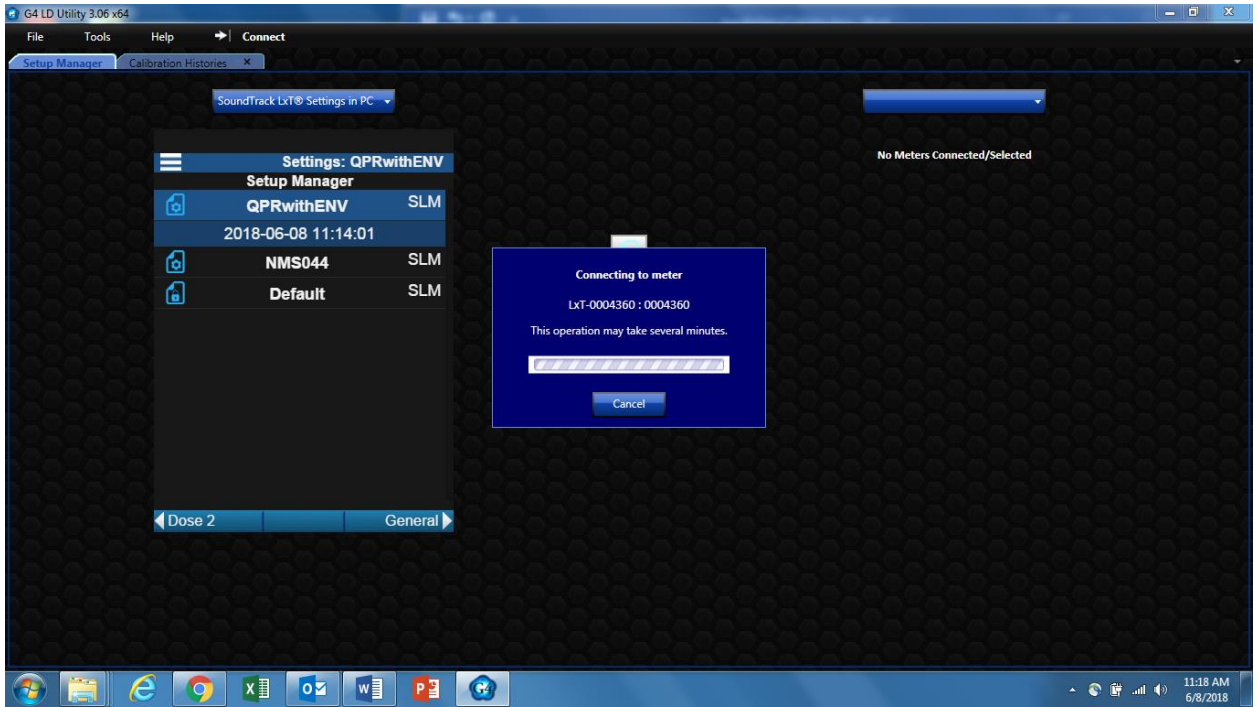
Under Setup Manager, select SLM.

Plug USB from meter into PC. Turn LxT on via power button on the front of the meter.

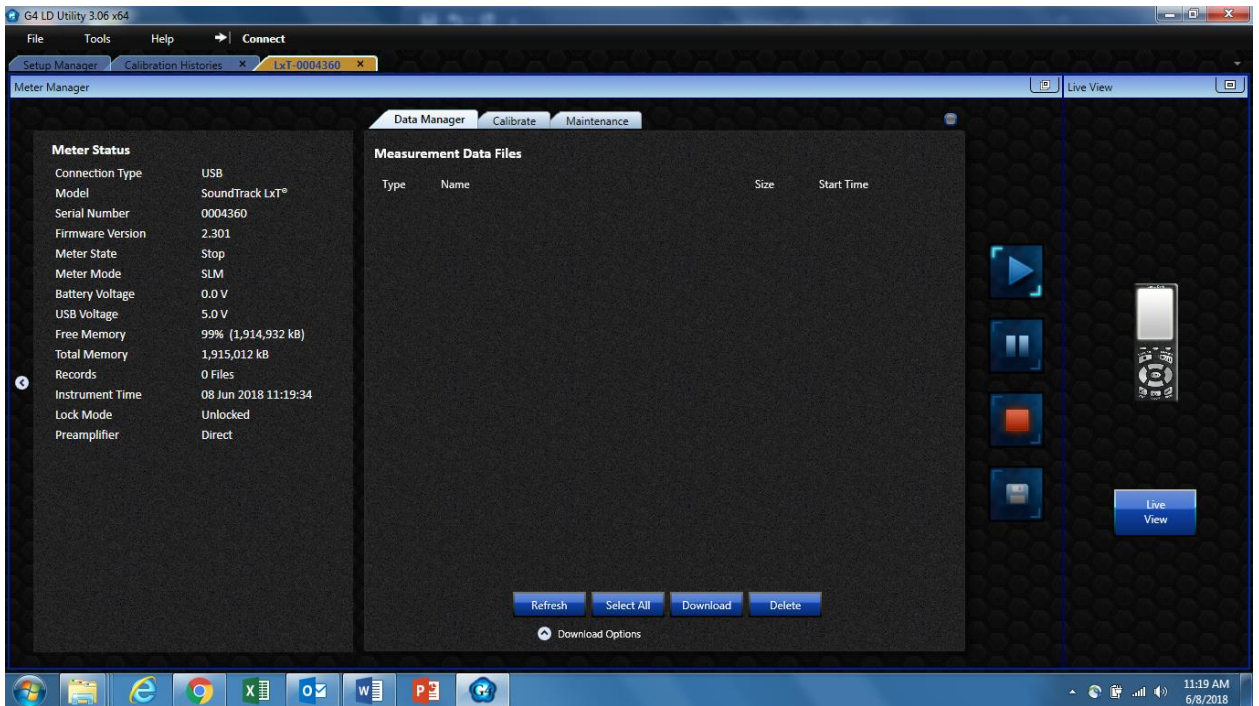
In G4 software, connect the meter by clicking “Connect” in the top menu. Make sure LxT is the selected device, and click “Connect.”



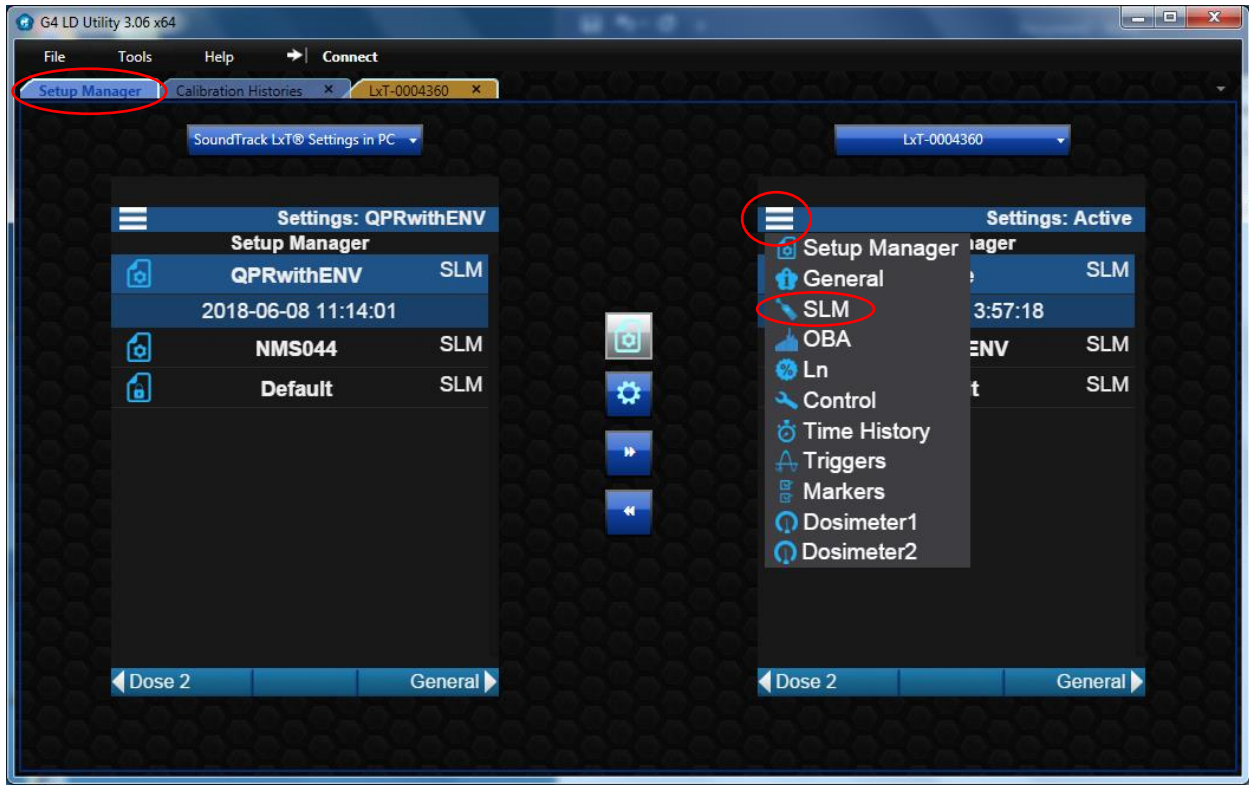
You will see a screen that looks like this:



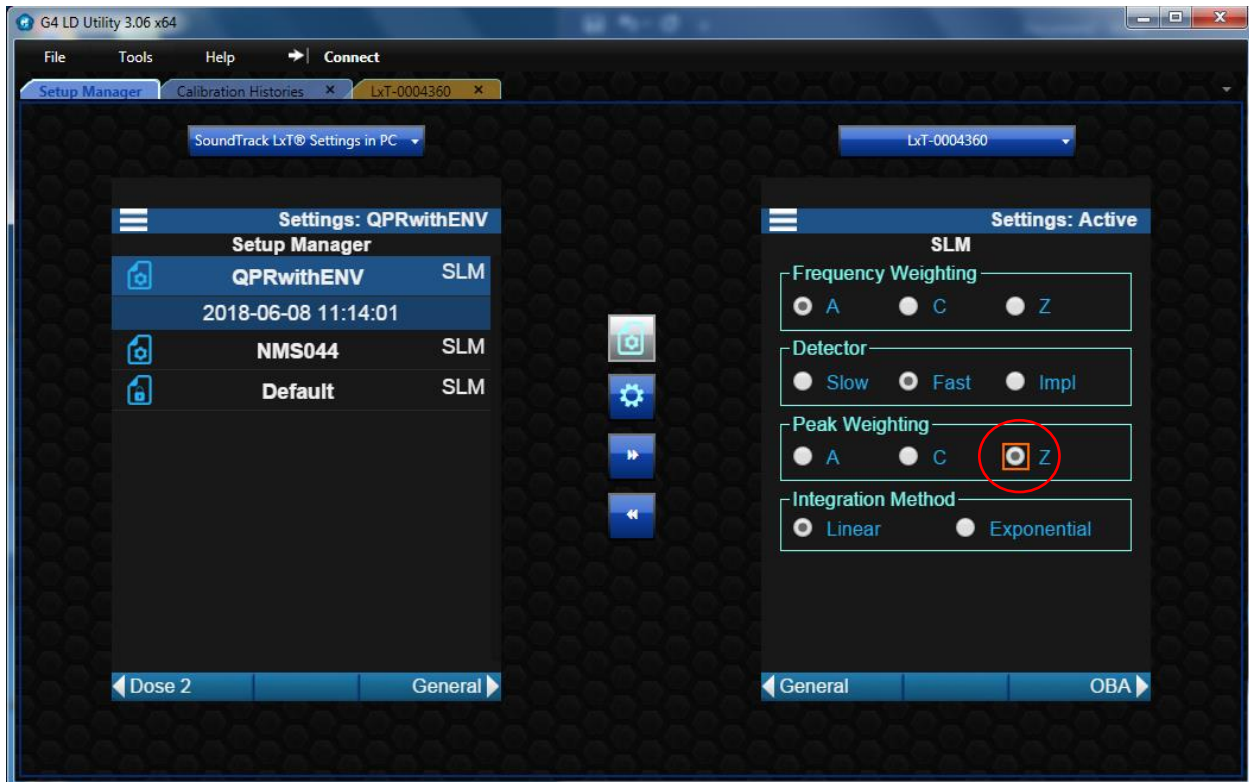
Then a new Meter Manager tab will appear in G4:



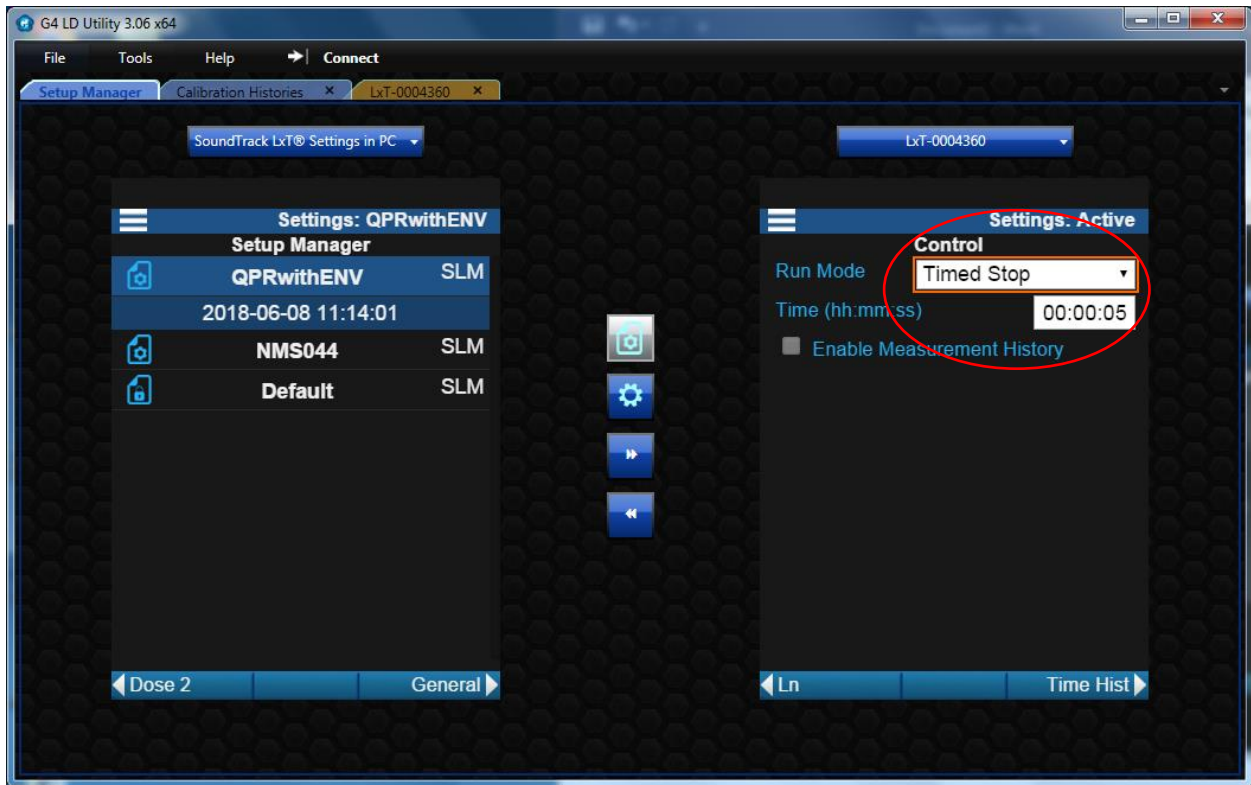
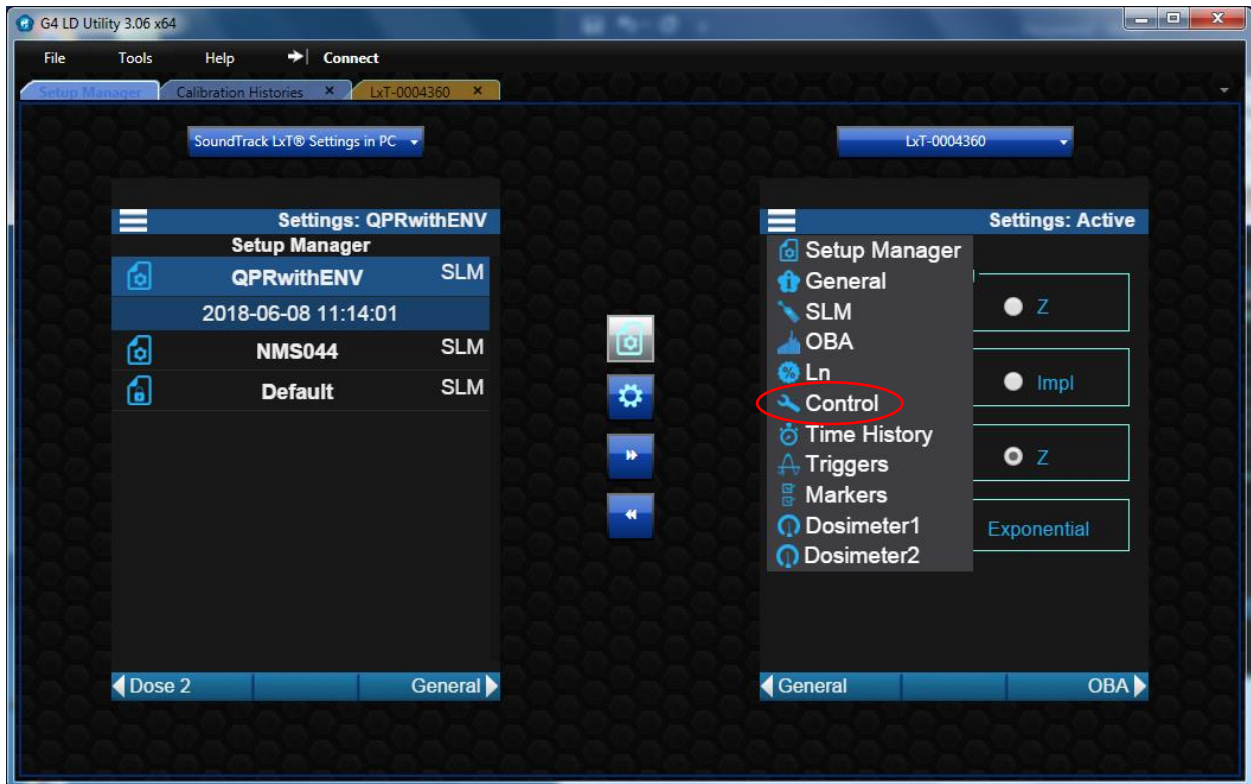
Click Setup Manager Tab



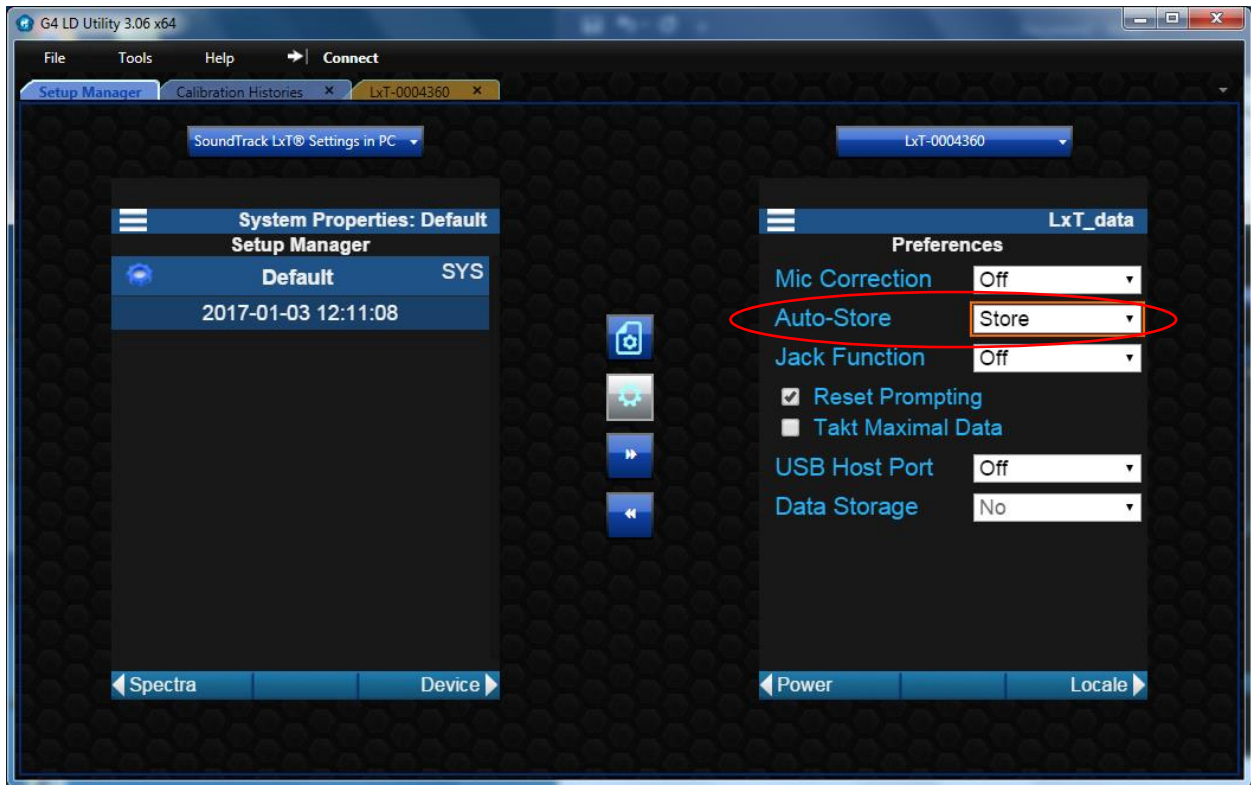
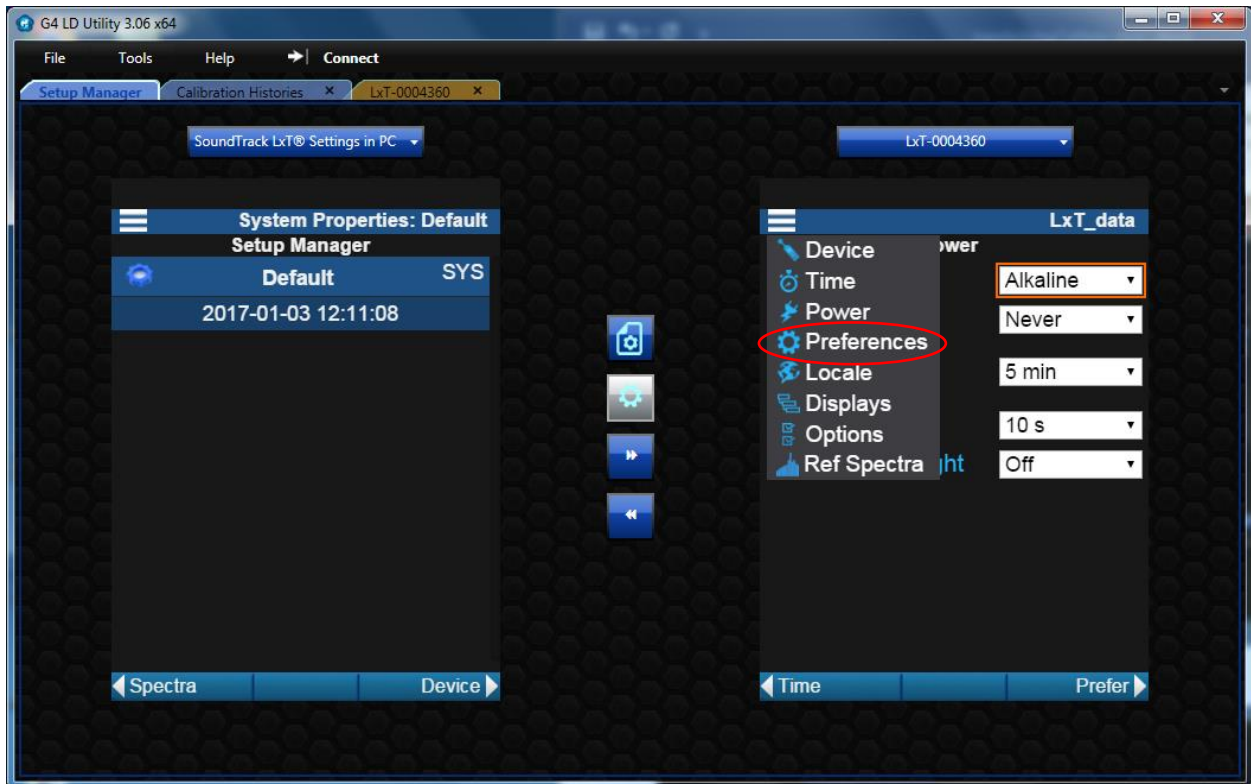
Set Peak Weighting to Z.



Set Control to a 5 second timed stop.

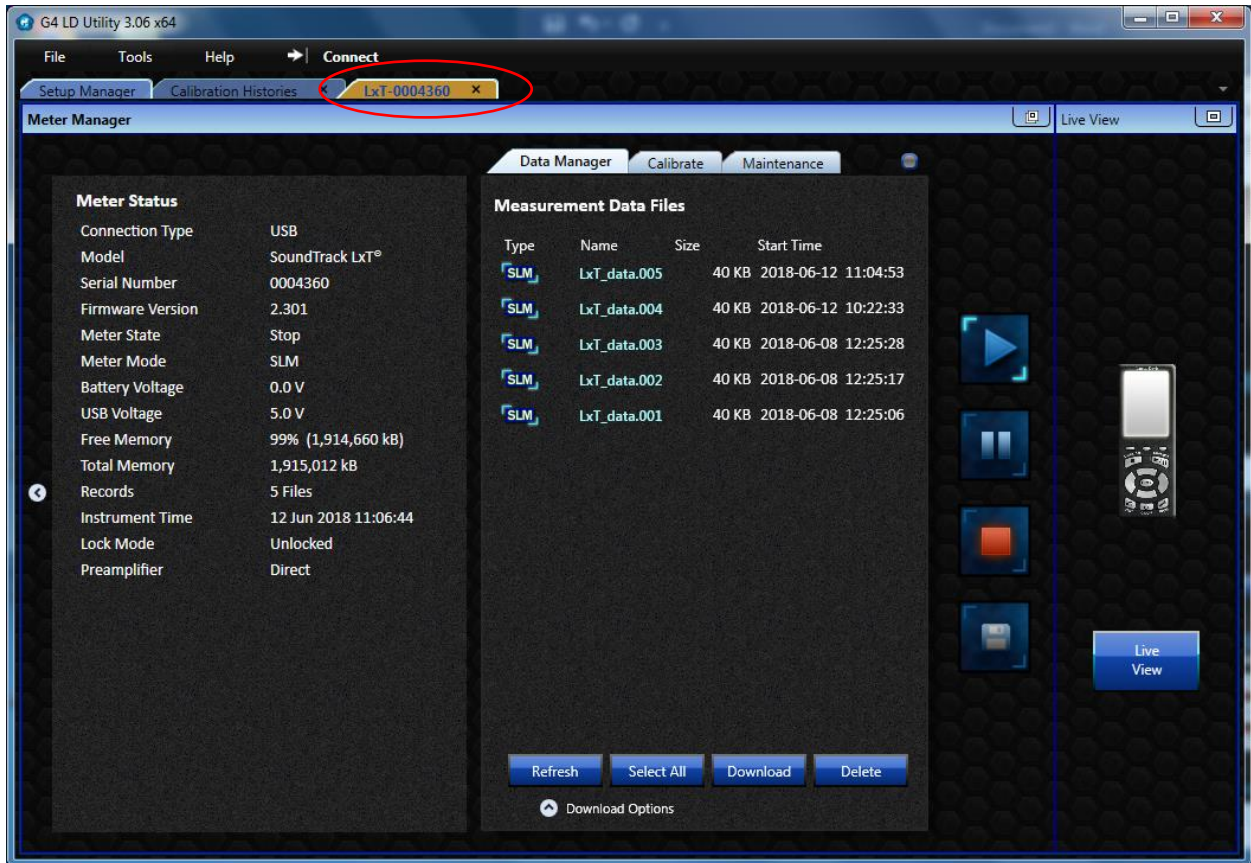


From the settings menu, turn on Autostore



From the G4 Meter Manager tab, you can start, stop, and pause measurements and view data files. The setup described above allows you to press Run, take your shot, and after 5 seconds, the measurement

will stop and data will be stored in a file with the LZpeak for that particular shot. Each shot is stored in its own file. From the G4 Meter Manager tab (shown below), you can start, stop, and pause measurements and view data files.



See this [User Guide](#) for more tips on the physical setup and making the measurement.